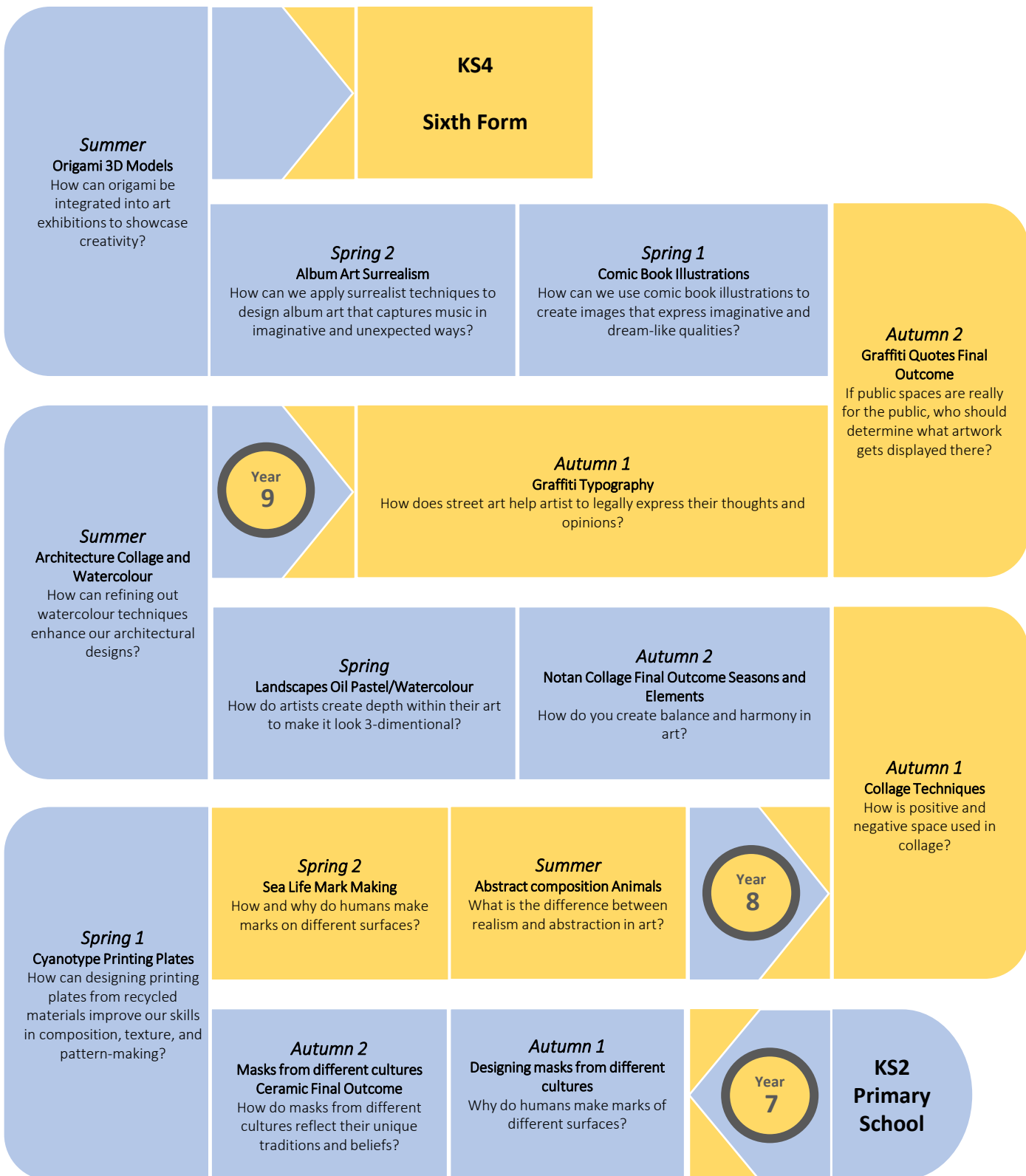


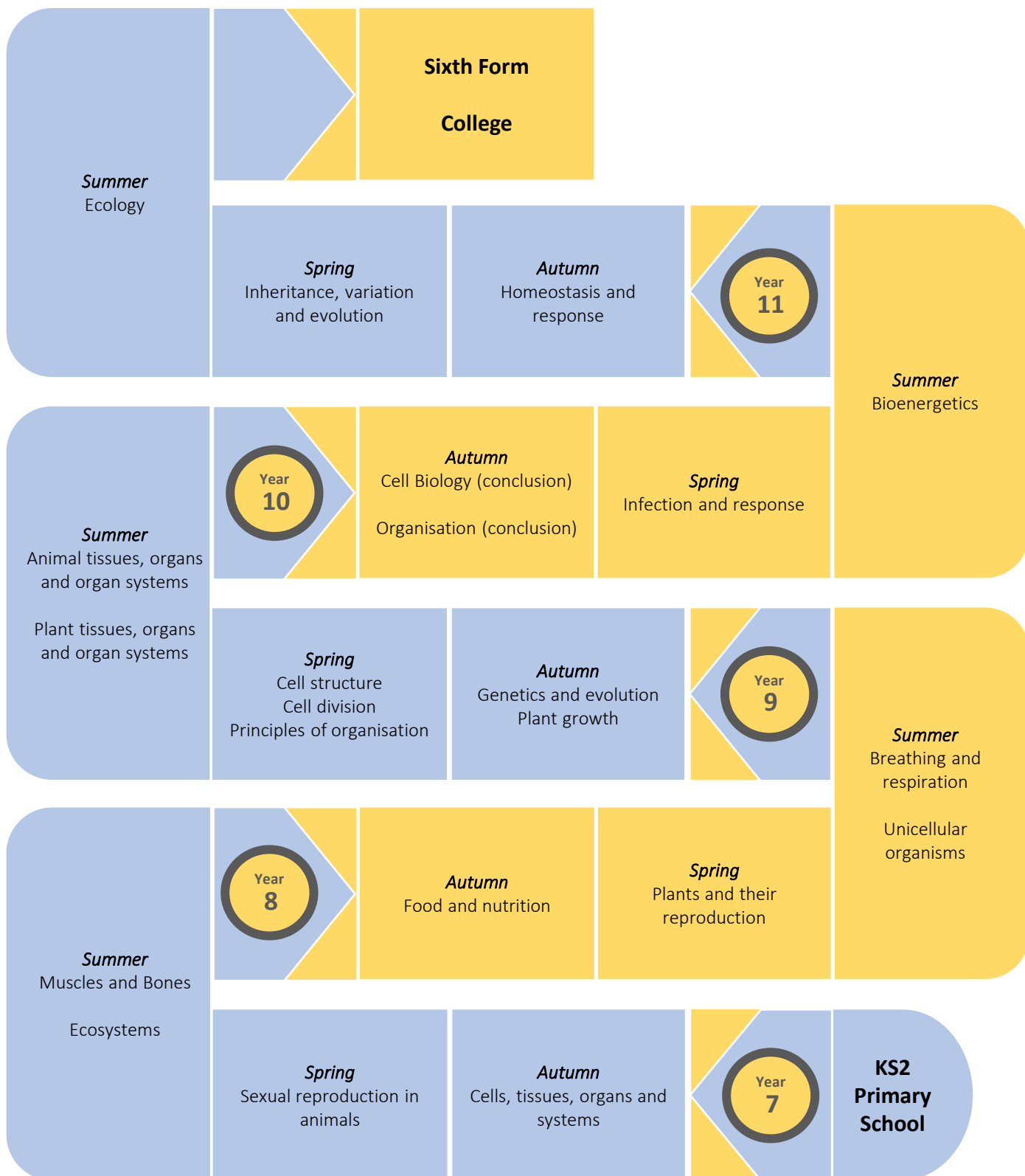


Art Curriculum Pathway



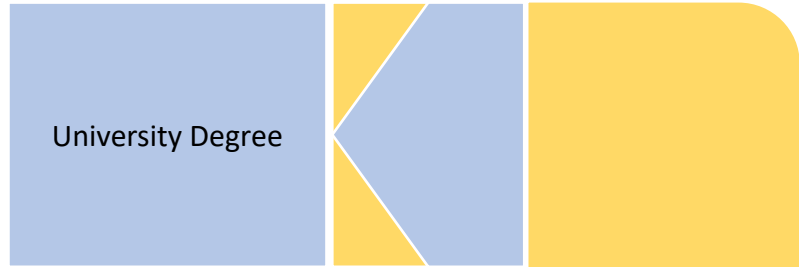


Biology Curriculum Pathway

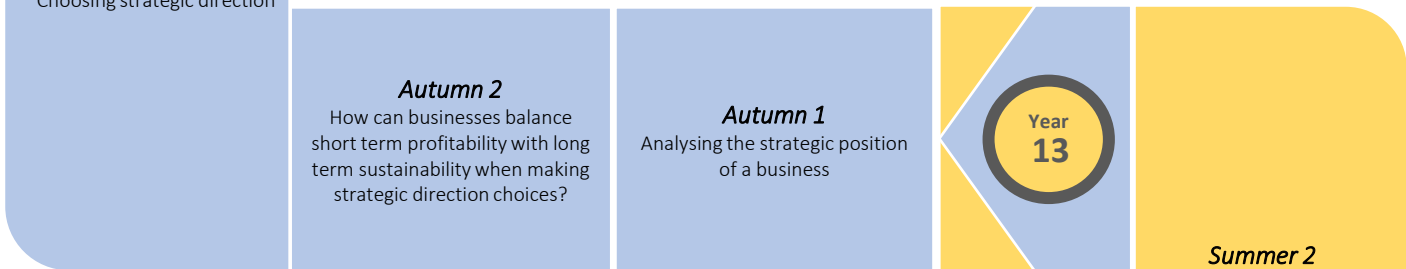
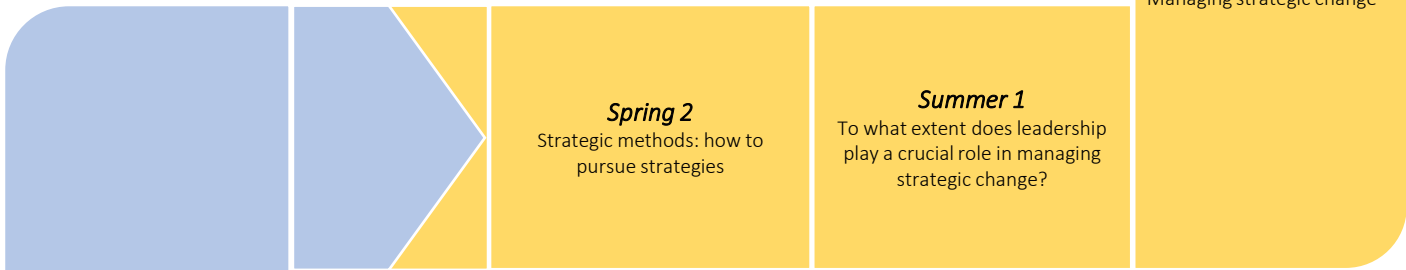




Business Curriculum Pathway



Summer 2
Managing strategic change



Summer 2
Decision making to improve human resource performance





Business/Enterprise Curriculum Pathway

University Degree

Summer
-Principles of Management (Exam)
 How does a manager balance between the needs of employees and the objectives of the business?
-Business decision making (Exam)
 Can a business make socially responsible decisions and still remain competitive?

Year 13

Summer
-International Business
 How does the economic and political stability of a country affect its attractiveness for international businesses?
-Developing a Marketing campaign (Exam)
 Has COVID-19 pandemic reshaped our understanding of business.
-Personal and Business Finance (Exam)

Autumn
-Investigating customer service
 Can a business truly satisfy all its customers all the time?
-Creative promotion
 What role does understanding of consumer psychology play in creative promotion?

Spring
-Visual Merchandising
 How does visual merchandising contribute to the overall customer experience?
-Training and development
 How does visual merchandising contribute to the overall customer experience?

Spring
-Recruitment and Selection in Business
 How can businesses ensure that their recruitment processes are inclusive and unbiased?
- Market research
 How has big data and analytics reshaped traditional market research practices??

Autumn
-Business Resources
 Has COVID-19 pandemic reshaped our understanding of business.
-Managing an event
 How has technology improved the logistical aspects of event management?

Year 12

Summer
-Make connections between different factors influencing a given enterprise
 What factors are inter-linked with one and other which influences a business.
-Be able to advise and provide recommendations to a given enterprise on ways to improve its performance

Autumn
-Demonstrate knowledge and understanding of elements of promotion and financial records
 What role do financial records play in assessing the success of various promotional tactics

Spring
-Interpret and use promotional and financial information in relation to a given enterprise
 How can businesses use historical promotional and financial data to forecast future trends and prepare for potential market changes?

Year 11

Summer
-Explore ideas and plan for a micro-enterprise activity
 How can micro-entrepreneurs effectively use creative thinking and innovation to develop unique business ideas that stand out in the market?
-Pitch a micro-enterprise activity

Spring
-Explore how market research helps enterprises to meet customer needs and understand competitor behaviour
 What role does market research play in helping enterprises develop innovative solutions that address unmet customer needs and differentiate themselves in a crowded market?
-Investigate the factors that contribute to the success of an enterprise
 What are the key internal and external factors that drive the success of an enterprise

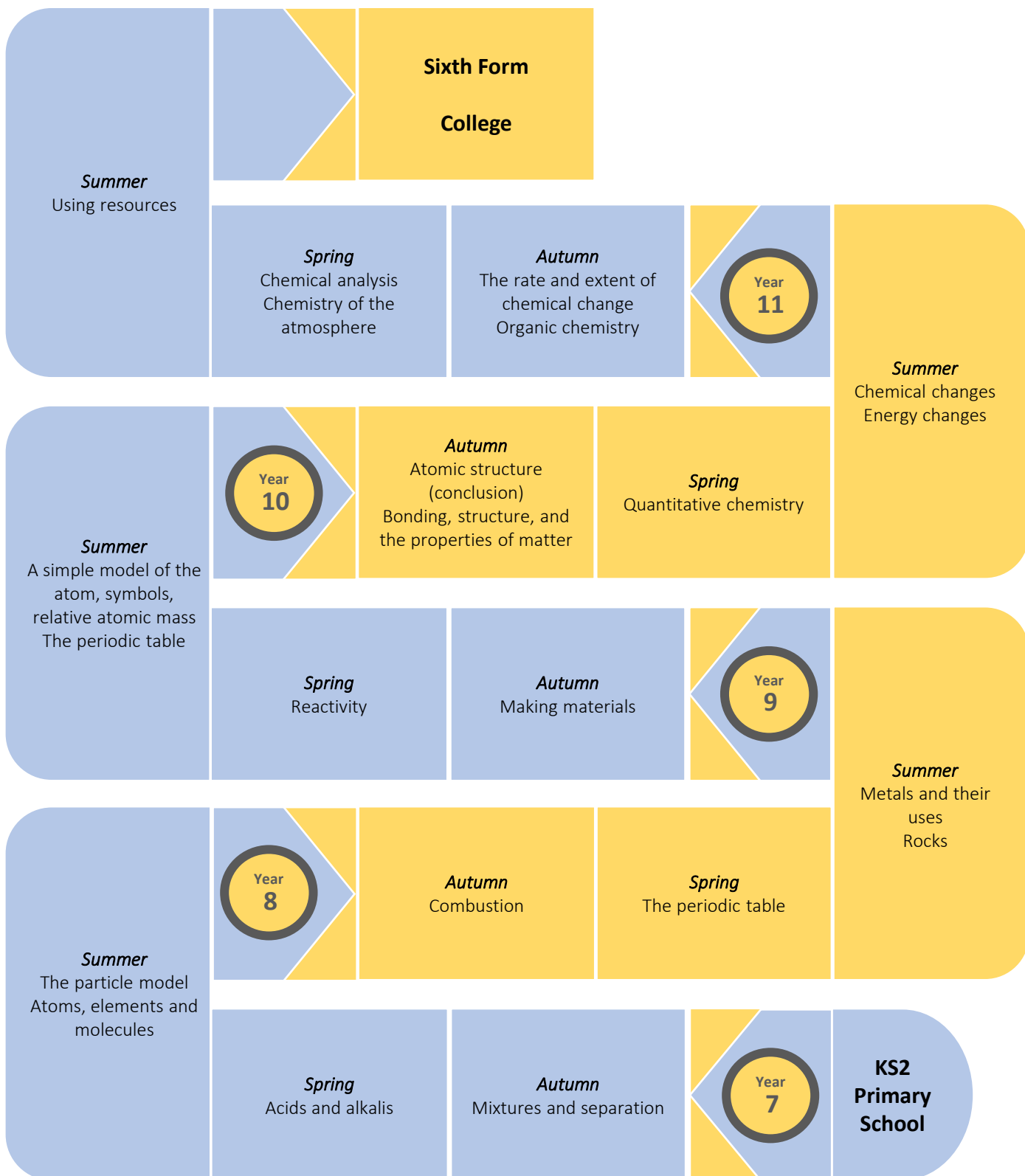
Autumn
-Pre-reading and introductory lessons for preparation.
-Examine the characteristics of enterprises
 How do various internal and external characteristics of enterprises contribute to their overall success?

Year 10

KS3
Years 7-9

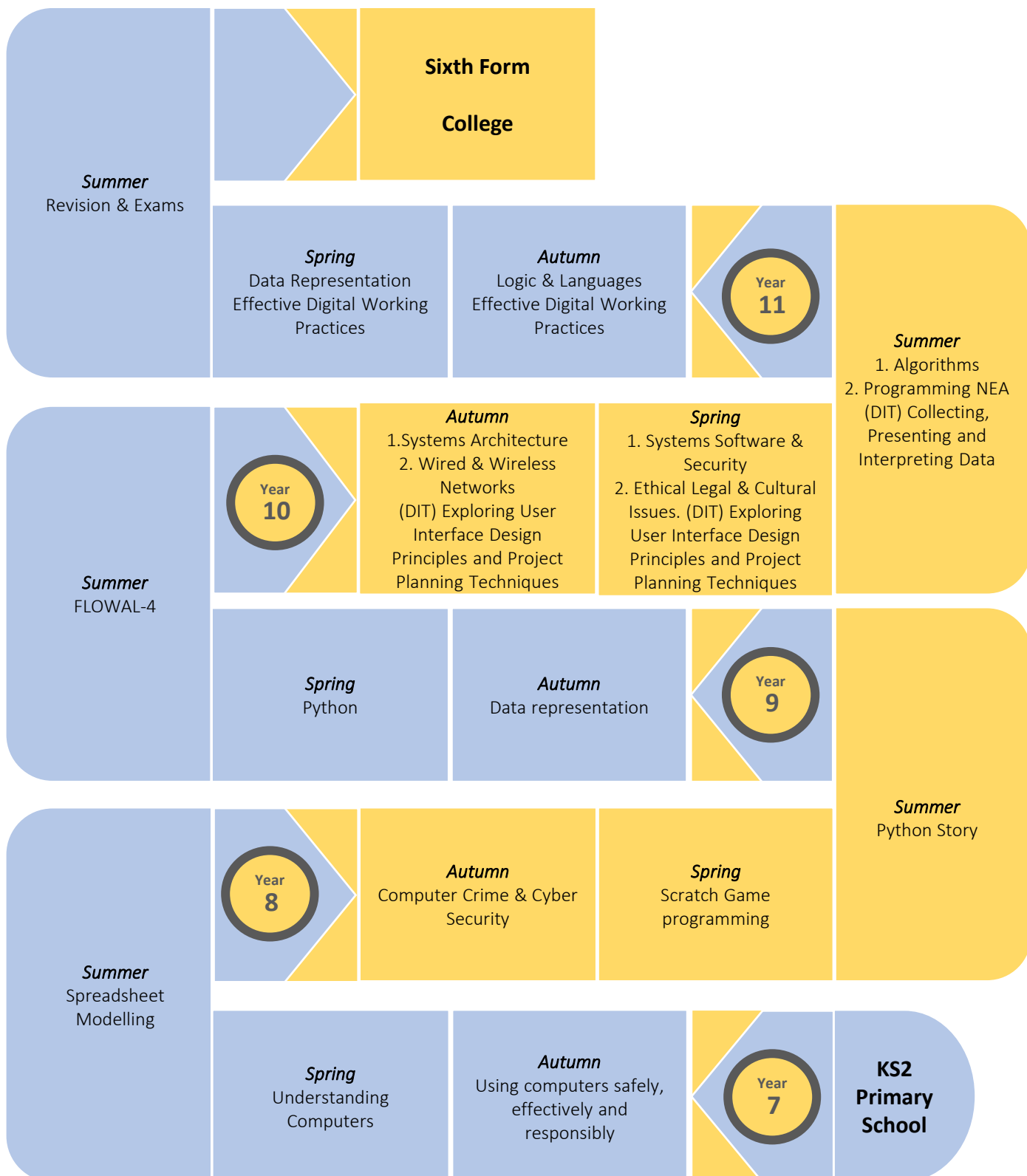


Chemistry Curriculum Pathway



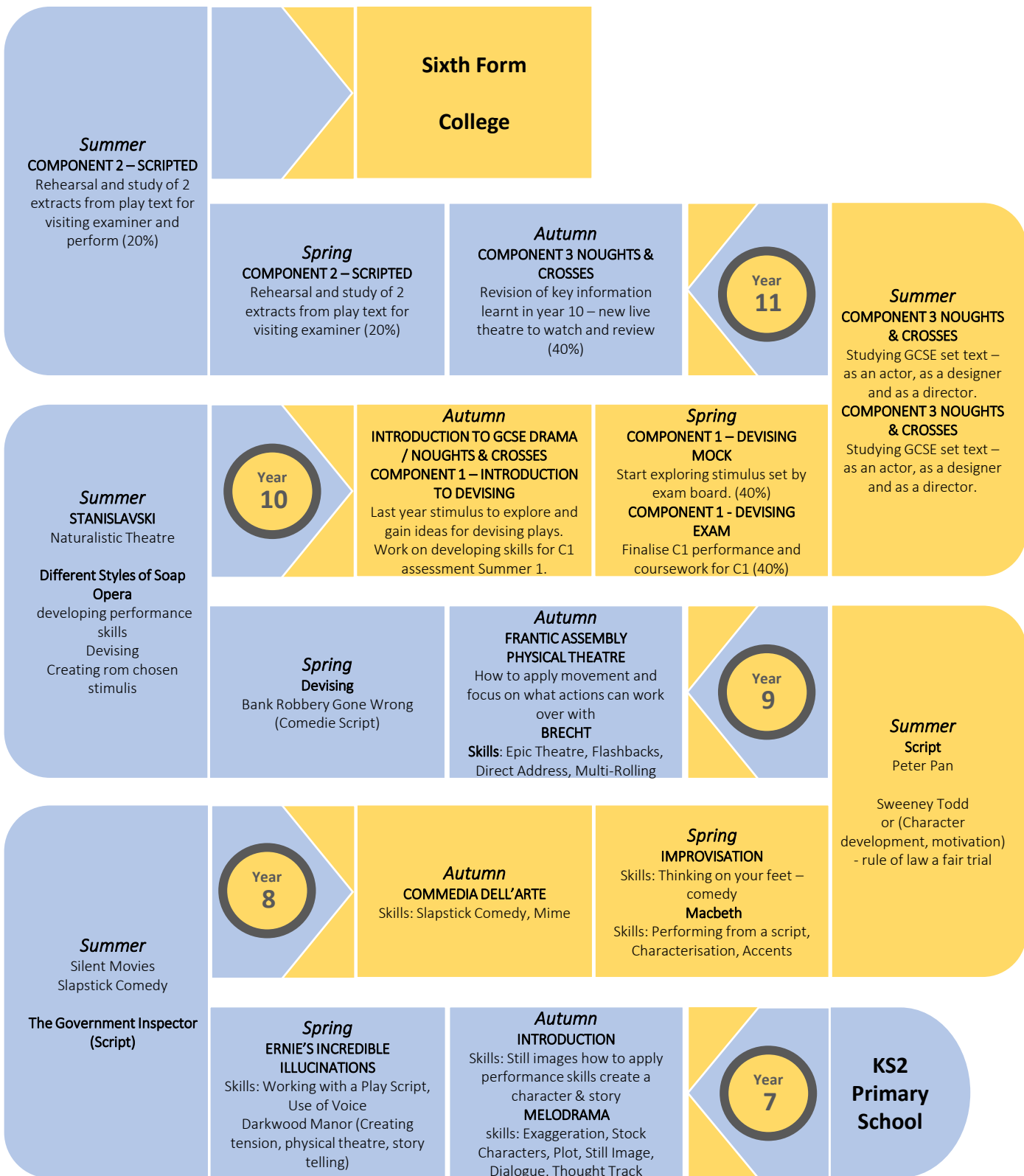


Computer Science/ICT Curriculum Pathway





Drama Curriculum Pathway



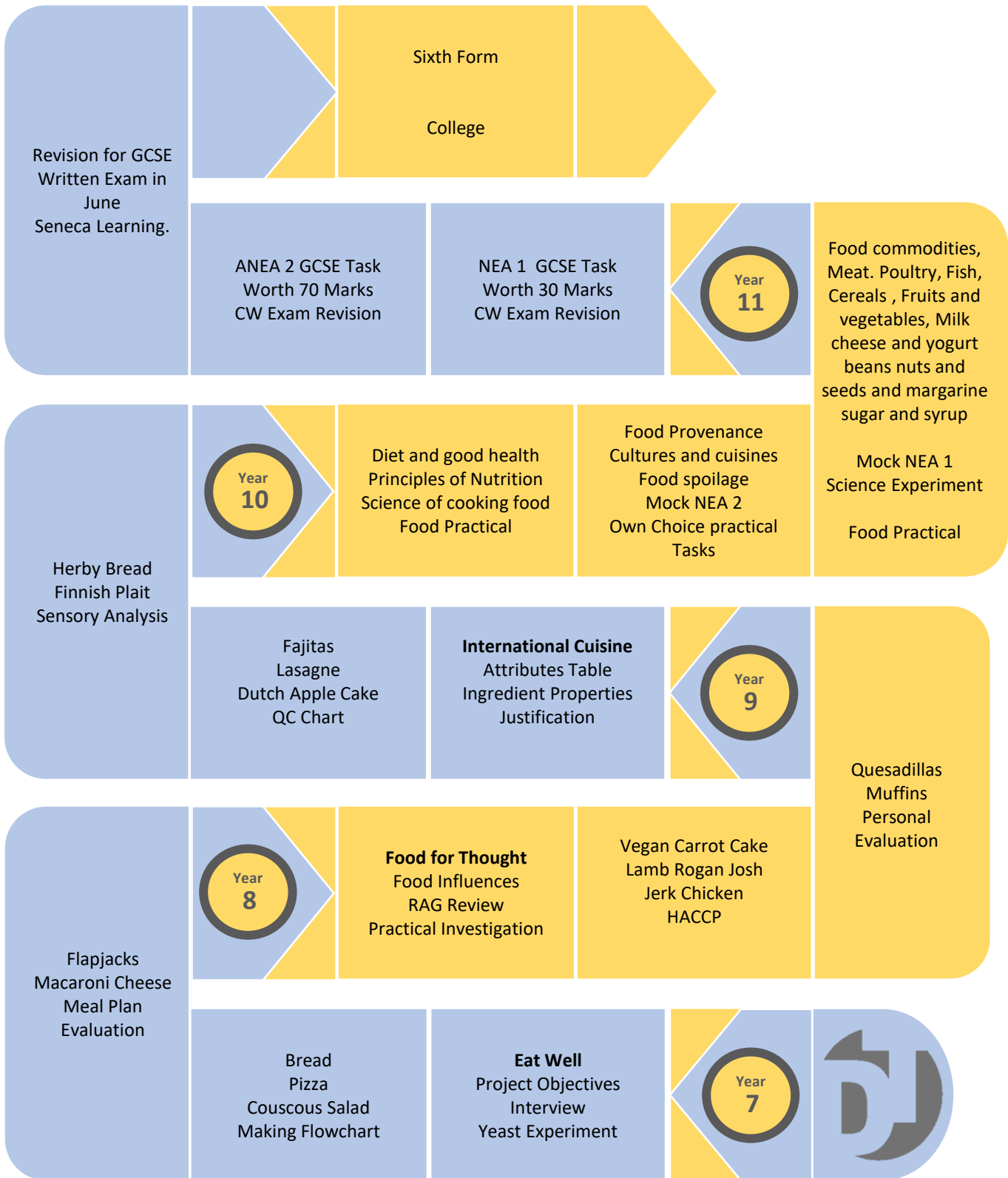


Architecture Design Curriculum Pathway



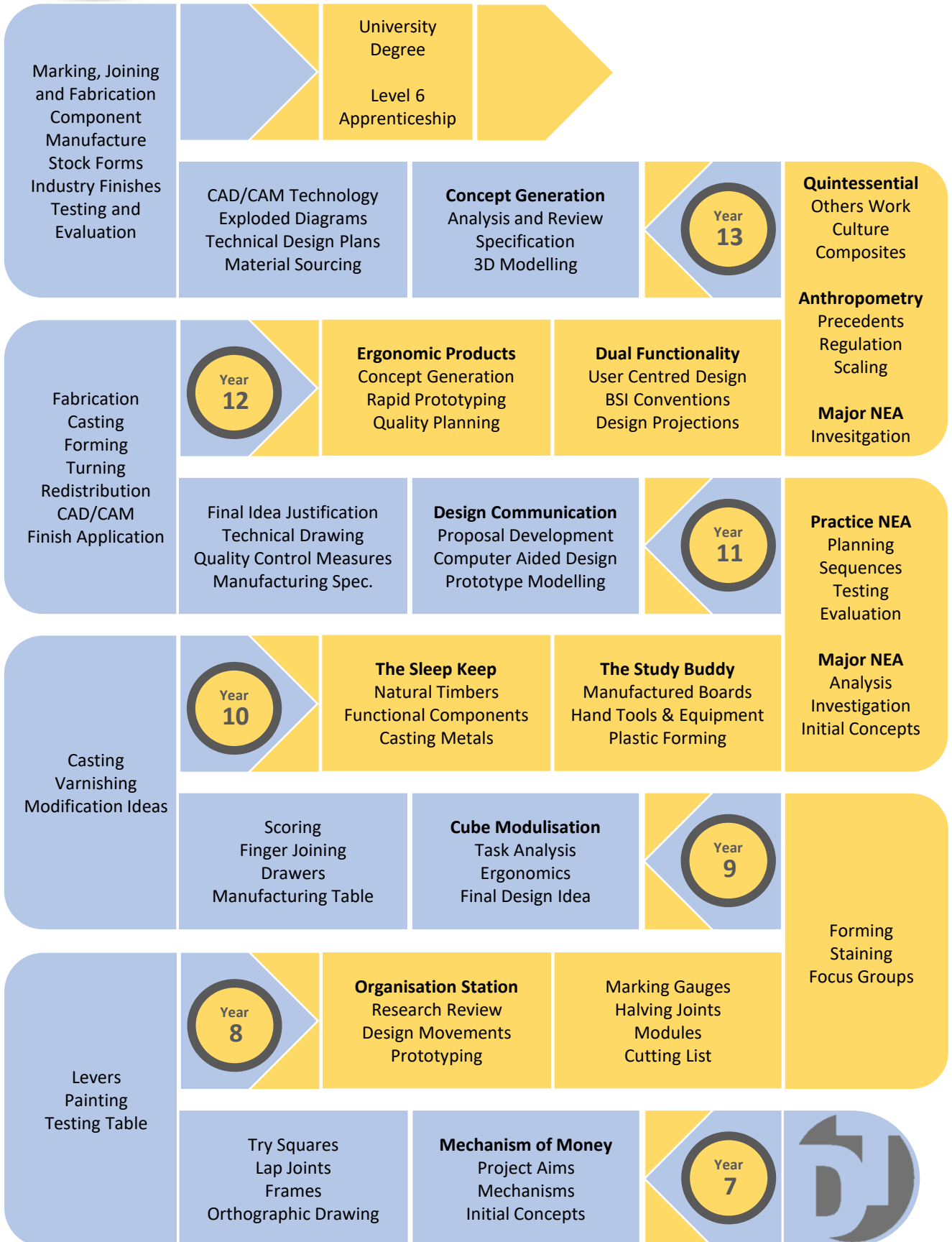


Food Nutrition Curriculum Pathway



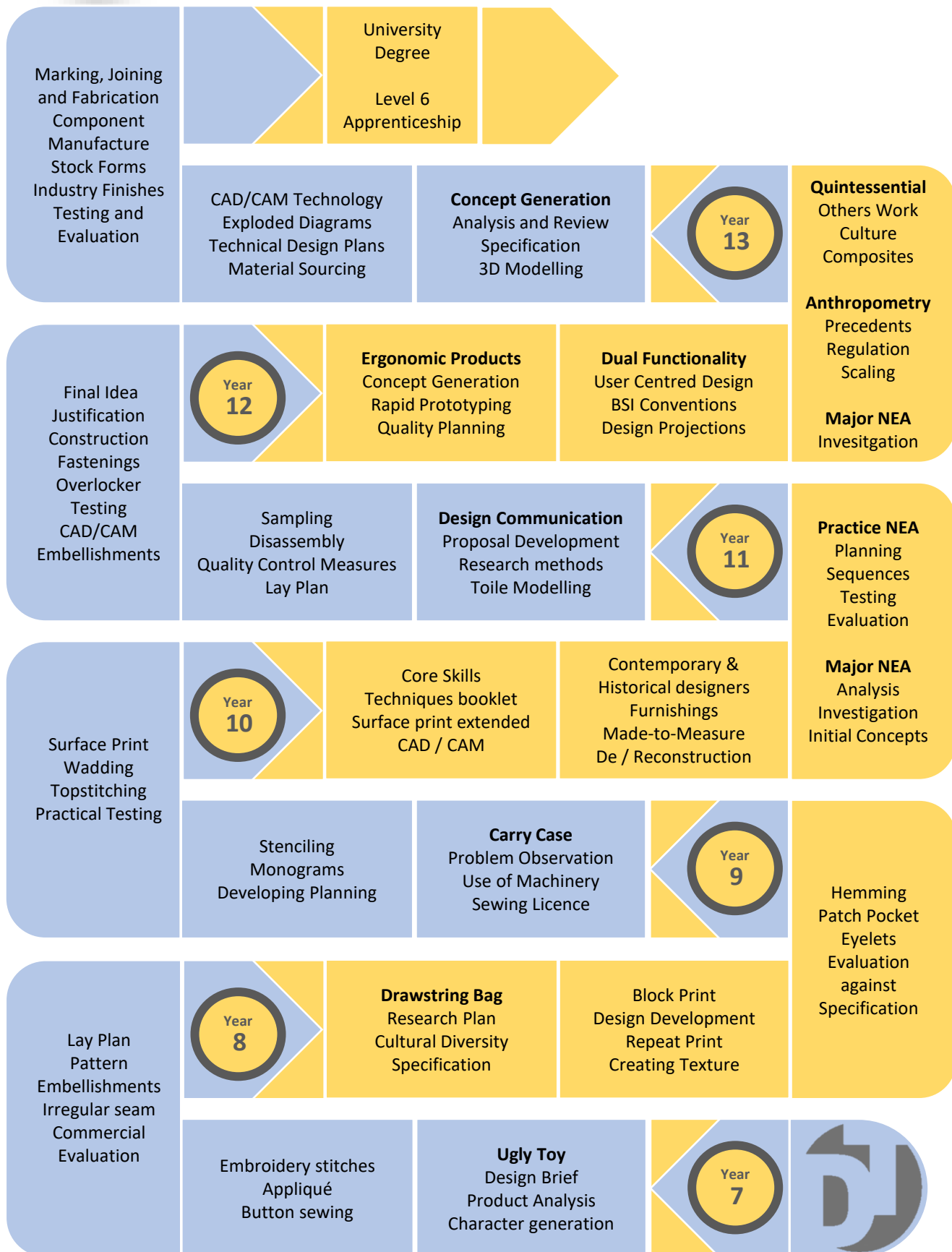


Product Design Curriculum Pathway



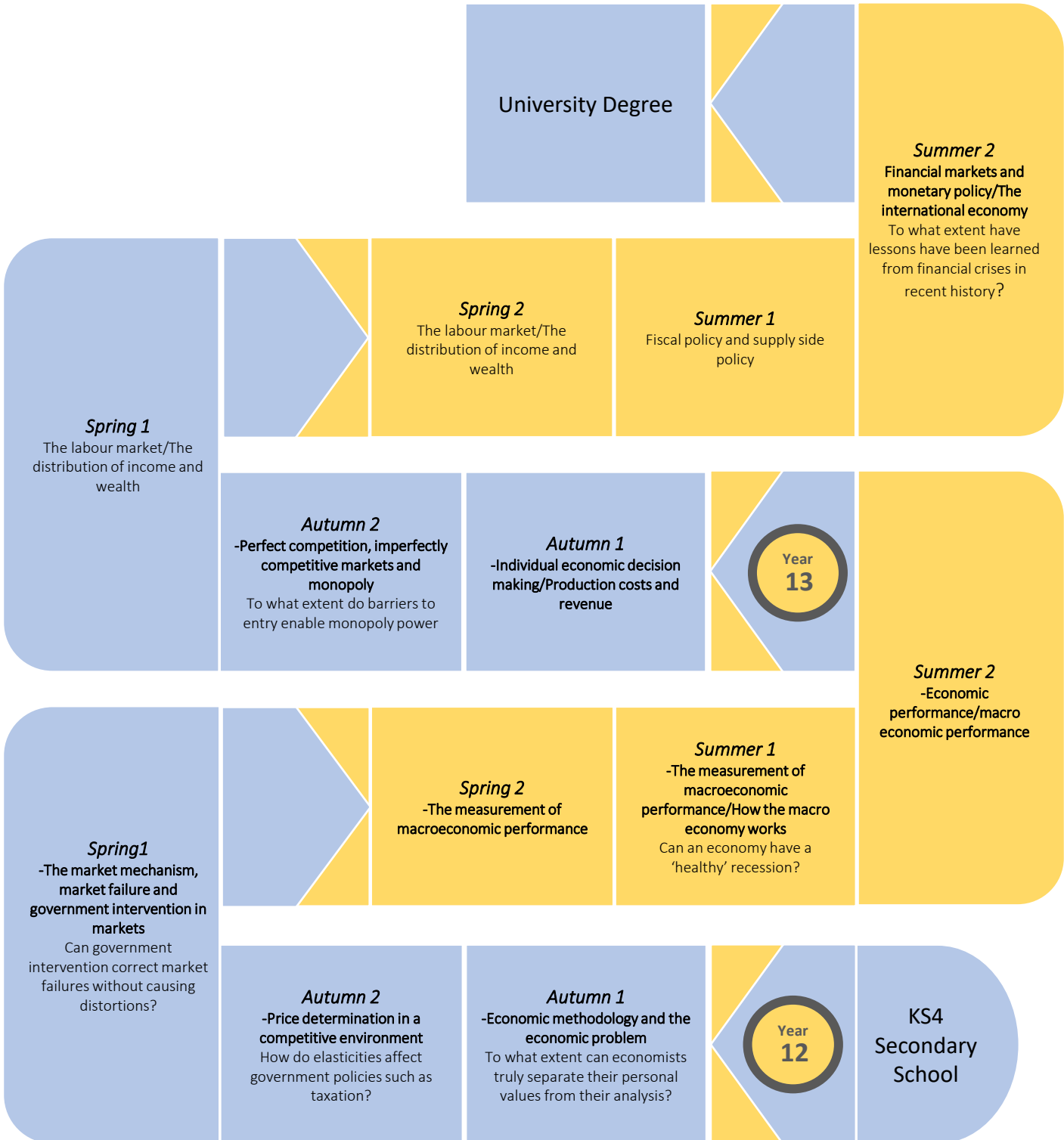


Fashion Textiles Curriculum Pathway



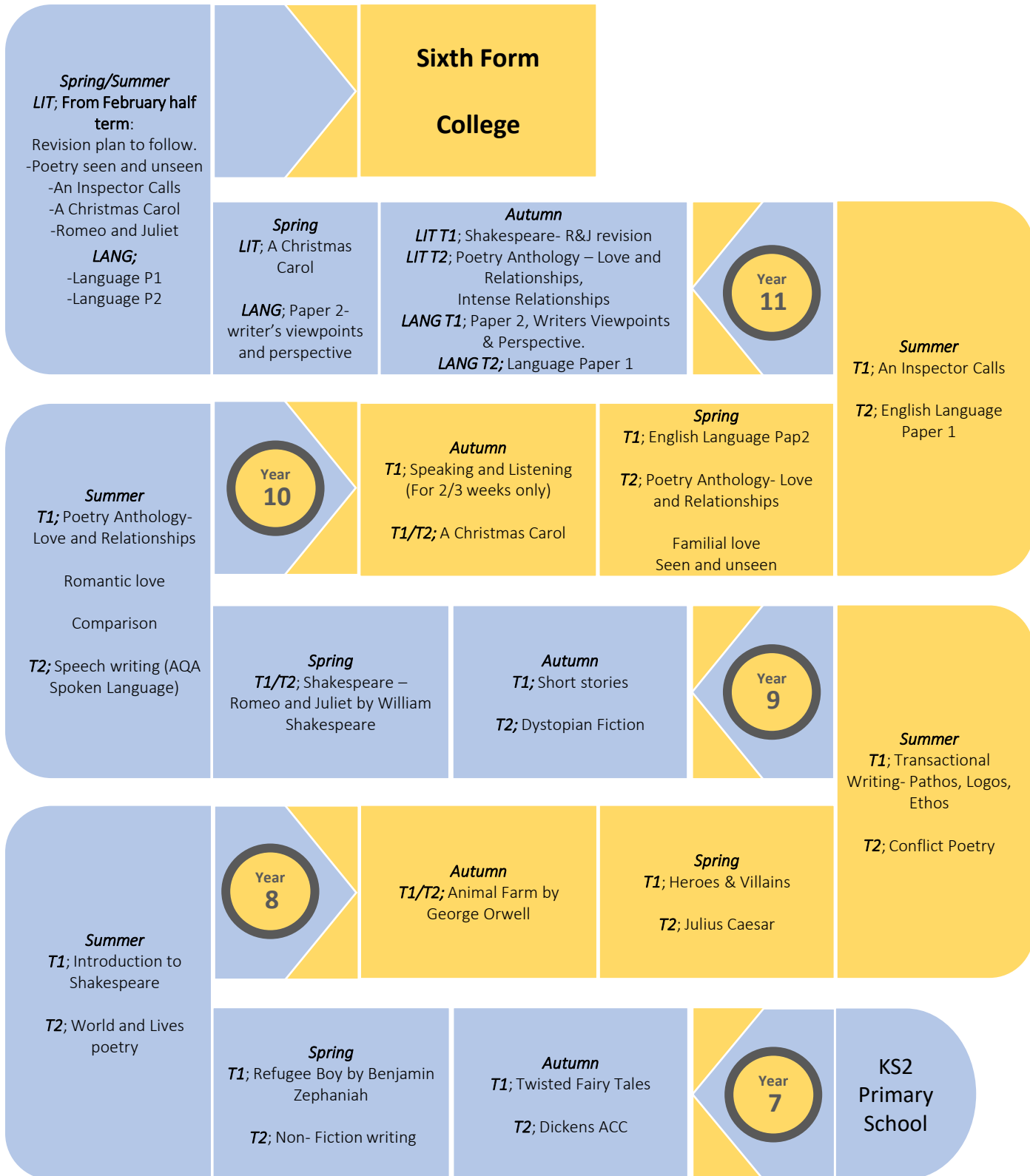


Economics Curriculum Pathway



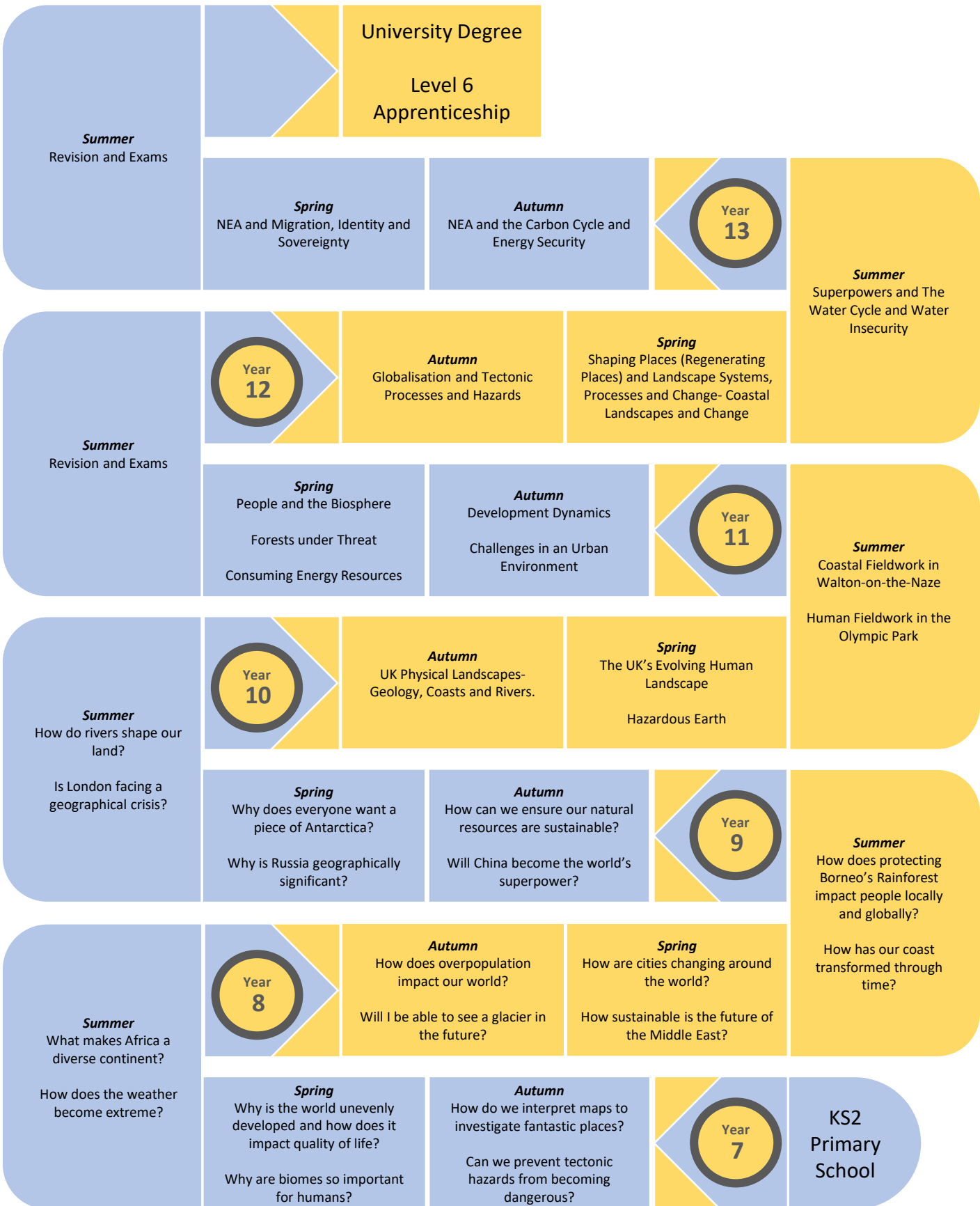


English Curriculum Pathway





Geography Curriculum Pathway





Health and Social Care Curriculum Pathway

BTEC Level 3 National Diploma (Double)

University Degree

Level 4 or 5 Vocational Qualification

Summer
Unit 11: Psychological Perspectives
Unit 14: Physiological Disorders and their care

Spring
Unit 2 and Unit 4
Unit 11 and 14

Autumn
Unit 2: Working in Health and Social Care
Unit 4: Enquiries into Current Research in Health and Social Care

Year 13

Summer
Unit 7: Principles of Safe Practice in Health and Social Care
Unit 8: Promoting Public Health

Summer
Component 3 Exam

Year 12

Autumn
Unit 1: Human Lifespan Development
Unit 5: Meeting Individual Care and Support Needs

Spring
Unit 1 and 5
Unit 7 and Unit 8

Spring
Component 3: Health and Wellbeing

Autumn
Component 2: Health and Social Care Services and Values
Coursework Tasks

Year 11

Summer
Component 2: Health and Social Care Services and Values

Tech Award in Health and Social Care

Year 10

Autumn
Component 1: Human Lifespan Development

Spring
Component 1: Human Lifespan Development
Coursework Tasks



History Curriculum Pathway

University Degree

Level 6
Apprenticeship

To what extent was free trade responsible for Britain's imperial expansion during the period 1763–1914?

How far was the Royal Navy responsible for maintaining British global power between 1763 and 1914

How far did British imperial policies adapt to the different challenges faced across the Empire between 1763 and 1914?

Year
13

To what extent was the Soviet state successful in controlling the ideas and beliefs of its citizens?

Did the Cultural Revolution achieve Mao's goal of preserving Communist ideology in China?"

Year
12

To what extent did Communist leaders rely on terror to maintain control of the USSR?

Did the Chinese Communist Party succeed in consolidating its control over China by 1957?

How far did Soviet economic policy prioritise ideology over the needs of the people?

Did Mao's economic policies between 1949 and 1965 reflect ideology rather than practicality?

Revision

Was Elizabeth's greatest challenge foreign enemies of domestic threats?

To what extent was Elizabethan England a 'Golden Age'?

To what extent did migration and settlement transform the West?

How did the US government contribute to the destruction of the indigenous way of life?

Year
11

How successful was the Nazi regime in controlling the German people between 1933 and 1939?

T1: Violent stunts or acts of duty- Why did Women get the vote in 1918?

Year
10

How did Crime, Punishment and Law Enforcement change 1000-present day

Did the Weimar Republic recover from its early problems between 1919 and 1929?

Why was Hitler able to become chancellor in 1933?

How far did Nazi policies succeed in shaping German society between 1933 and 1939?

T2: How close did the Cold War get to becoming a 'hot war'?

T1: How could the Holocaust have happened?

T2: Was the Balfour Declaration the most significant turning point in the bid to create the state of Israel?

T1: To what extent did two bullets cause WW1?

T2: How did Hitler seize and consolidate power in Germany?

Year
9

T1: How successful is activism in achieving racial equality?

T1: To what extent was the Tudor period a religious roller-coaster?

Year
8

T1: How did the Industrial Revolution change Britain and its people?

T2: How reliant were the British on the exploitation of others?

T1: To what extent was freedom achieved for India?

T2: To what extent has Britain always been a happy home for migrants?

T2: Why did the French kill their King?

T2: How did the clash between King and Parliament transform England?

T1: How did the crusades change the medieval world?

T2: How did a medieval pandemic change the lives of the English?

T1: How did religion, leadership and society shape ancient Egyptian society?

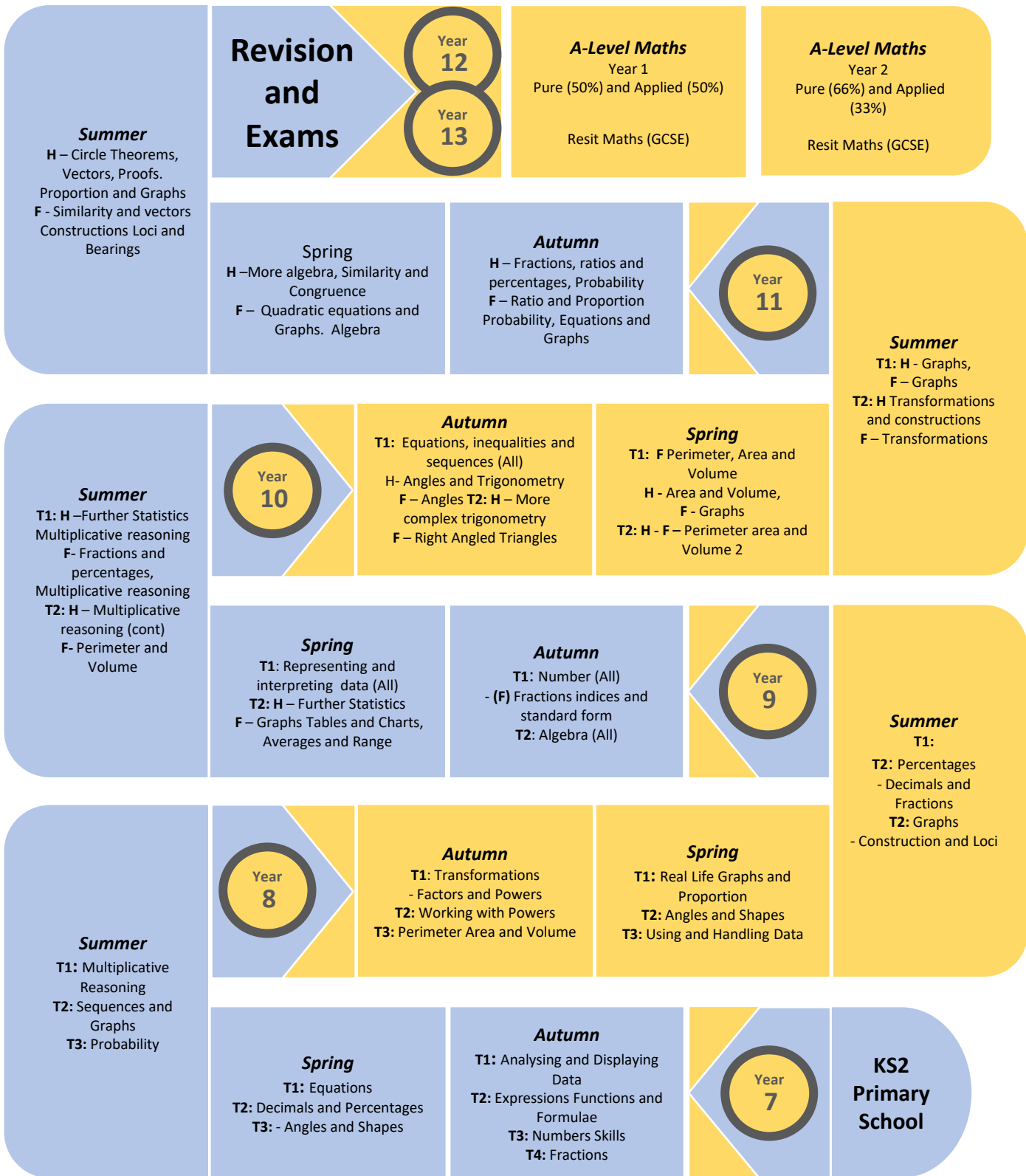
T2: Did the Norman Conquest really bring a 'truck load of trouble' to England?

Year
7

KS2
Primary
School

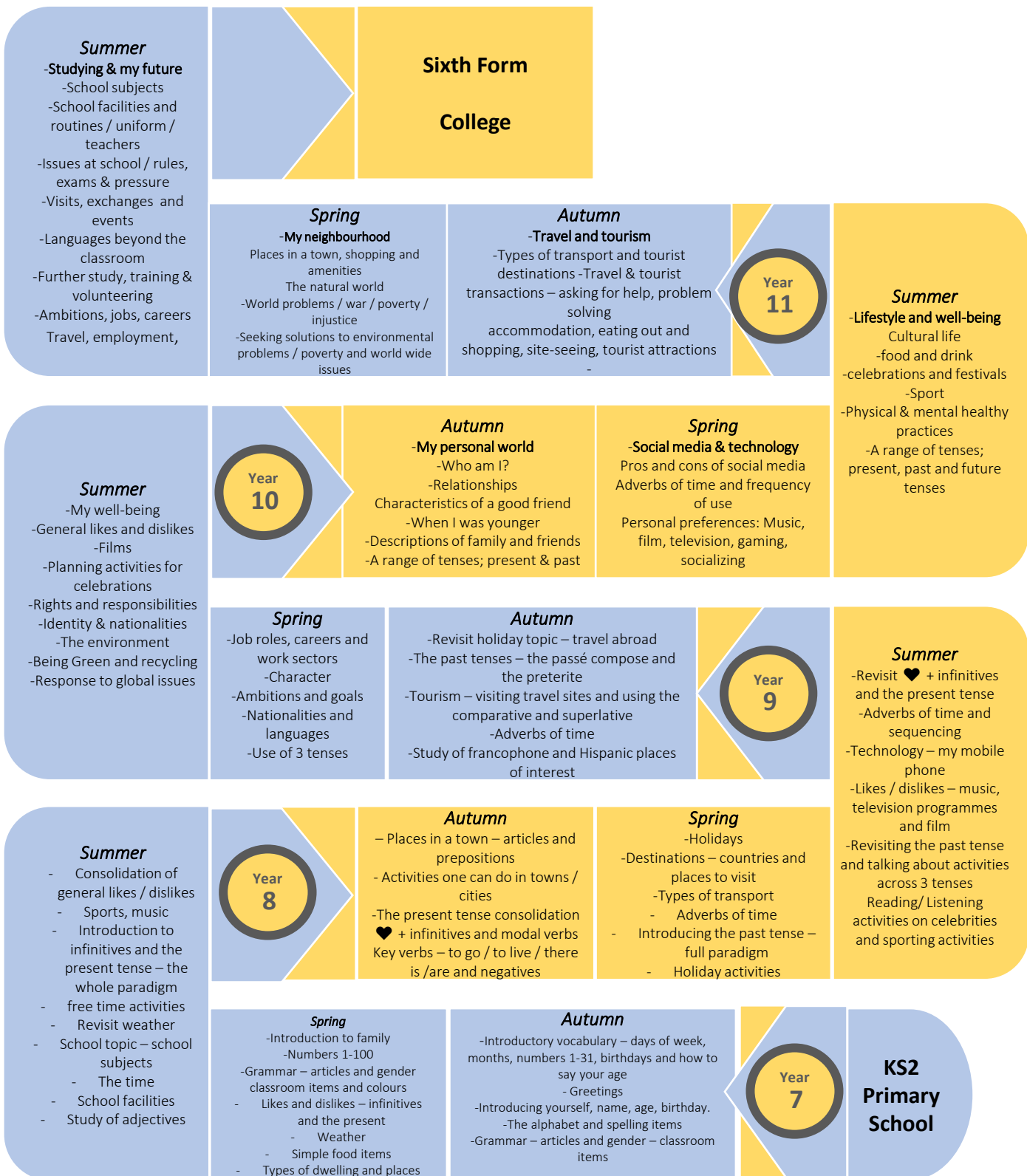


Maths Curriculum Pathway



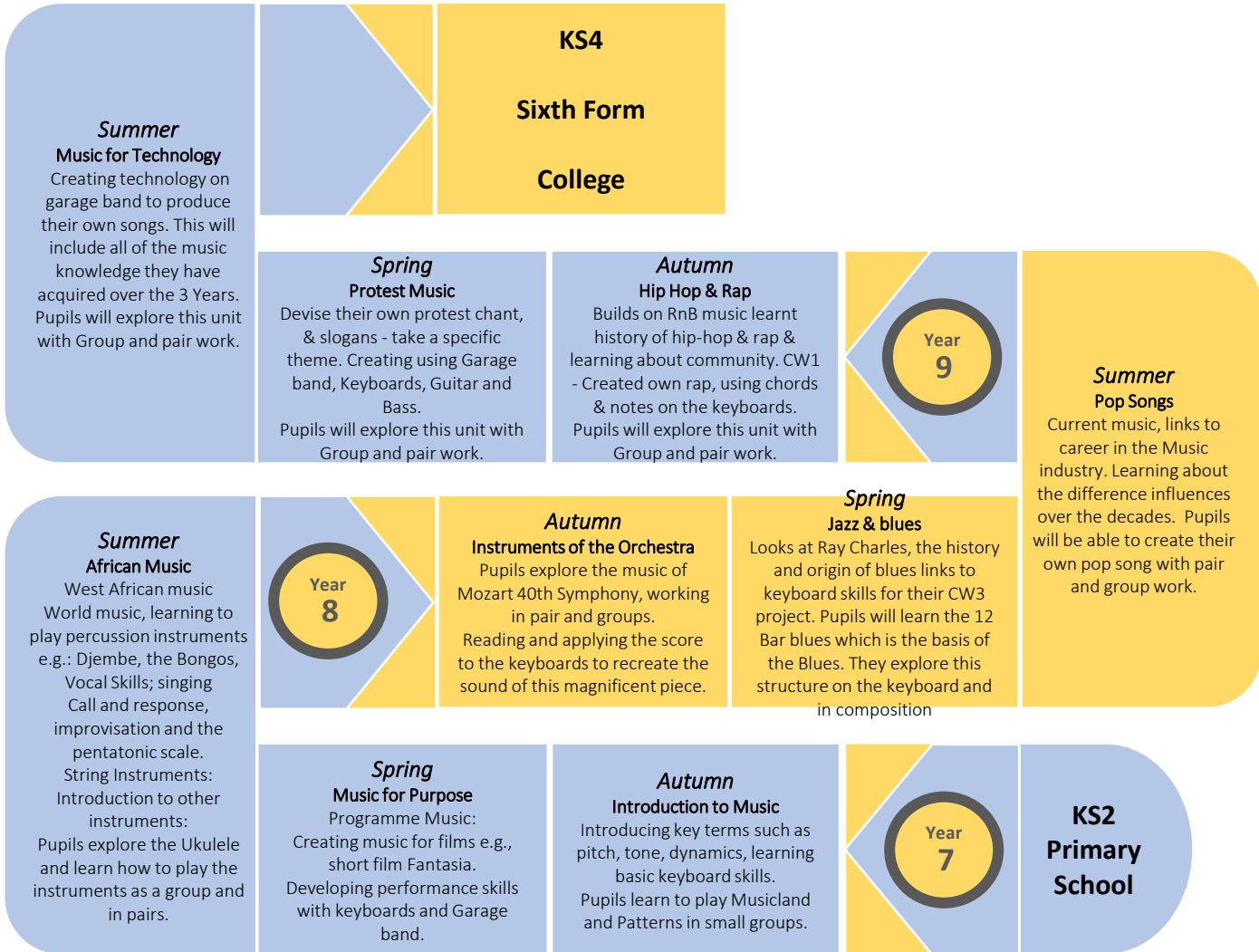


MFL Curriculum Pathway





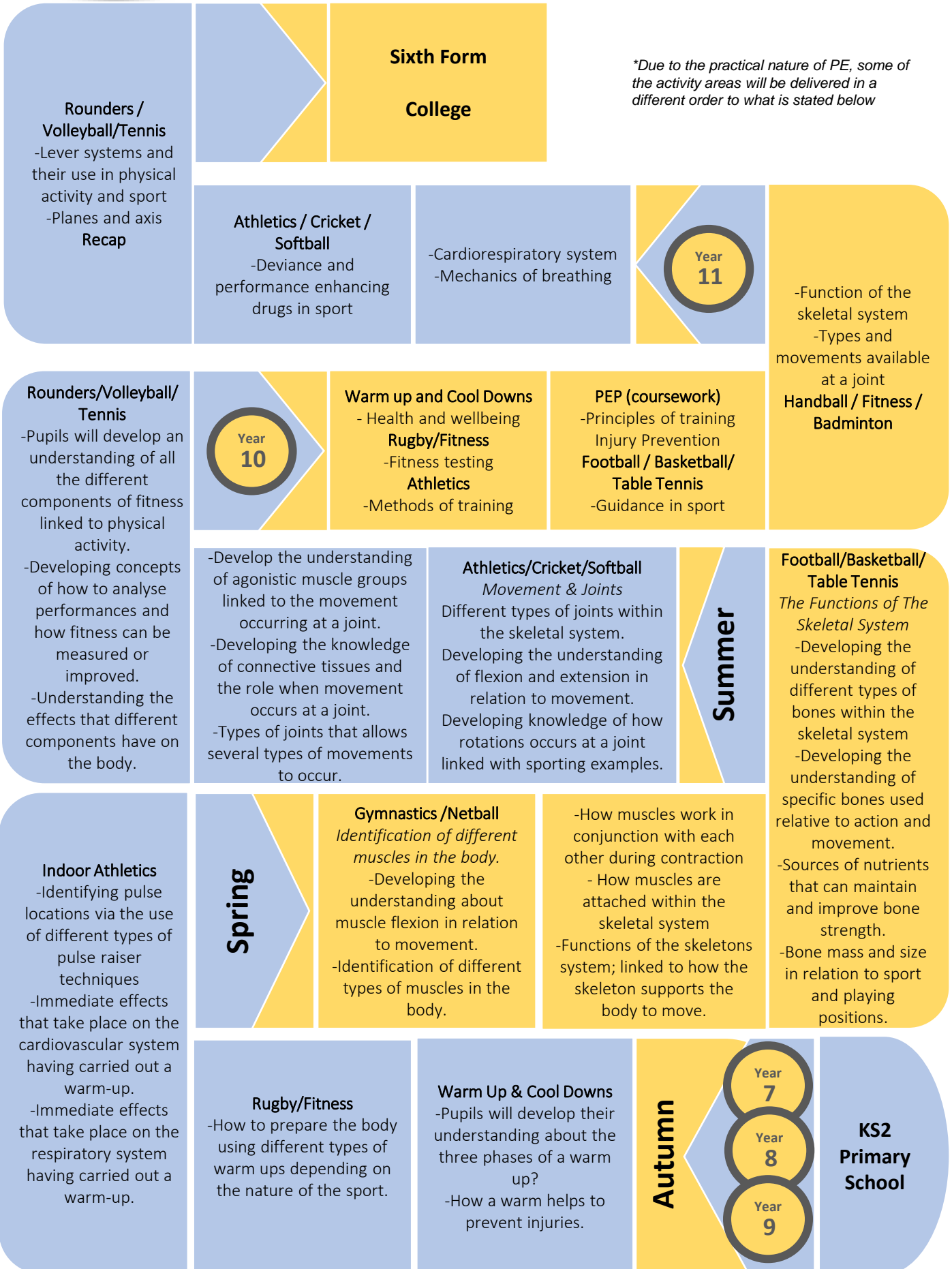
Music Curriculum Pathway





PE Curriculum Pathway

**Due to the practical nature of PE, some of the activity areas will be delivered in a different order to what is stated below*



Rounders / Volleyball/Tennis

- Lever systems and their use in physical activity and sport
 - Planes and axis
- Recap**

Sixth Form College

Athletics / Cricket / Softball

- Deviance and performance enhancing drugs in sport

- Cardiorespiratory system
- Mechanics of breathing

Year 11

- Function of the skeletal system
 - Types and movements available at a joint
- Handball / Fitness / Badminton**

Rounders/Volleyball/ Tennis

- Pupils will develop an understanding of all the different components of fitness linked to physical activity.
- Developing concepts of how to analyse performances and how fitness can be measured or improved.
- Understanding the effects that different components have on the body.

Year 10

Warm up and Cool Downs

- Health and wellbeing
- Rugby/Fitness**
- Fitness testing
- Athletics**
- Methods of training

PEP (coursework)

- Principles of training
 - Injury Prevention
- Football / Basketball/ Table Tennis**
- Guidance in sport

- Develop the understanding of agonistic muscle groups linked to the movement occurring at a joint.
- Developing the knowledge of connective tissues and the role when movement occurs at a joint.
- Types of joints that allows several types of movements to occur.

Athletics/Cricket/Softball

- Movement & Joints*
- Different types of joints within the skeletal system.
 - Developing the understanding of flexion and extension in relation to movement.
 - Developing knowledge of how rotations occurs at a joint linked with sporting examples.

Summer

Football/Basketball/ Table Tennis

- The Functions of The Skeletal System*
- Developing the understanding of different types of bones within the skeletal system
 - Developing the understanding of specific bones used relative to action and movement.
 - Sources of nutrients that can maintain and improve bone strength.
 - Bone mass and size in relation to sport and playing positions.

Indoor Athletics

- Identifying pulse locations via the use of different types of pulse raiser techniques
- Immediate effects that take place on the cardiovascular system having carried out a warm-up.
- Immediate effects that take place on the respiratory system having carried out a warm-up.

Spring

Gymnastics /Netball

- Identification of different muscles in the body.*
- Developing the understanding about muscle flexion in relation to movement.
 - Identification of different types of muscles in the body.

- How muscles work in conjunction with each other during contraction
- How muscles are attached within the skeletal system
- Functions of the skeletons system; linked to how the skeleton supports the body to move.

Rugby/Fitness

- How to prepare the body using different types of warm ups depending on the nature of the sport.

Warm Up & Cool Downs

- Pupils will develop their understanding about the three phases of a warm up?
- How a warm helps to prevent injuries.

Autumn

Year 7

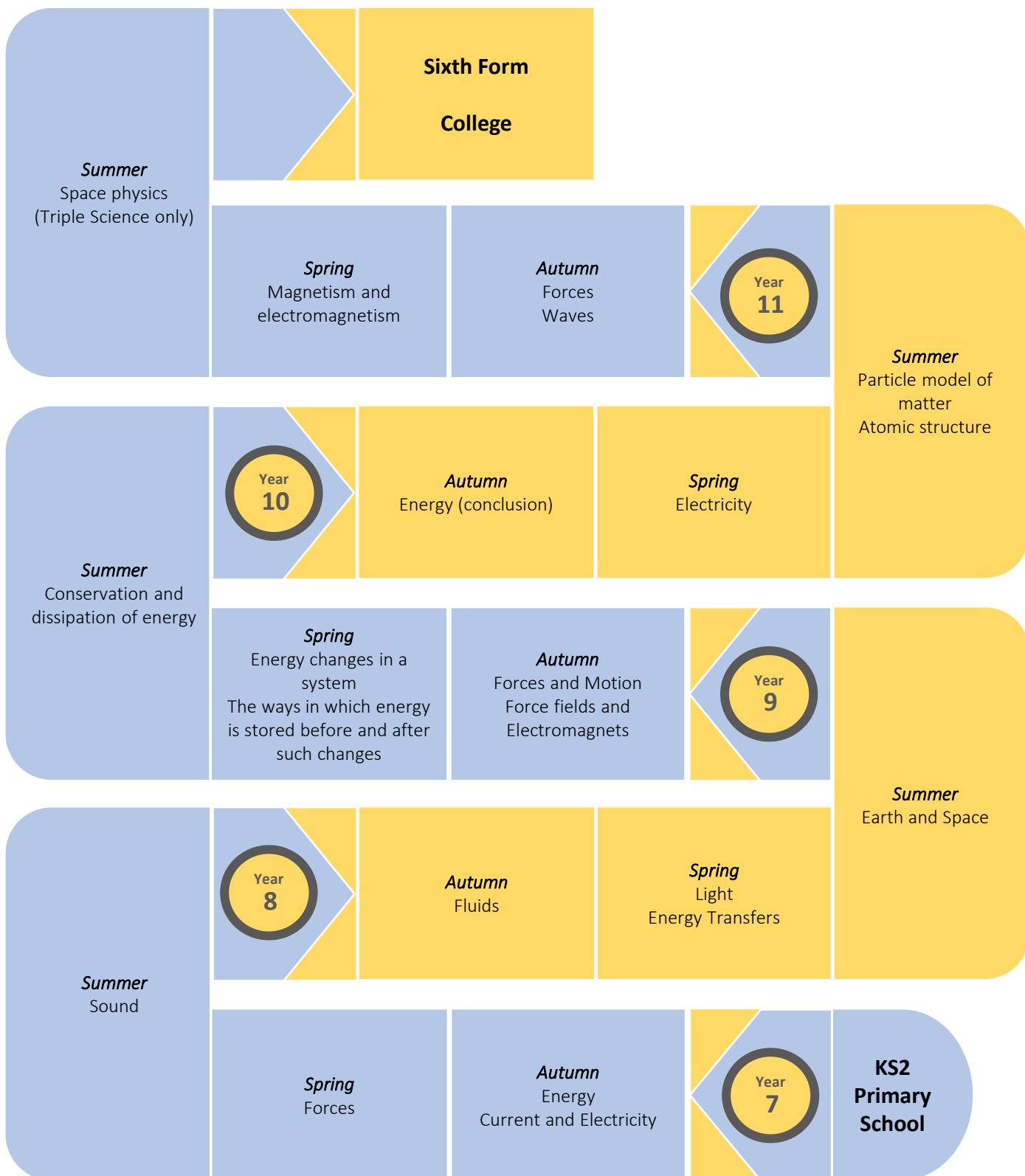
Year 8

Year 9

KS2 Primary School



Physics Curriculum Pathway





PIE Curriculum Pathway

University Degree

Summer

How can I stay healthy during my exams?

Spring

What are my next steps?

Autumn 1

What does a good personal statement look like?

Autumn 2

FGM – Hibo Wadare

Year 13

Summer 1

What skills do I need to be successful?

Summer 2

What does a good personal statement look like?

Summer 1

Money or happiness: which matter more?

Summer 2

What is Unifrog?

Year 12

Autumn 1

How do we develop our academic skills?

Autumn 2

What careers and pathways are available to us?

Spring

How do I secure the most of my work experience?

Autumn 1

How do I become ready for year 11?

Autumn 2

Drugs Education: how do I stay safe?

Year 11

Summer 1

What is the meaning of life and death?

Summer 2

How might I recognise an abusive relationship?

Summer 1

If I do decide to have sex, what do I need to consider?

Summer 2

How can we make the world a fairer place?

Year 10

Autumn 1

How do I become GCSE ready?

Autumn 2

What does family mean in today's society? (RE relationship module)

Spring

How do I make the most of my work experience? (Unifrog)

Autumn 1

Is mental health taken seriously enough by society?

Autumn 2

Should gang members be considered victims?

Year 9

Summer 1

Who is in charge in the UK?

Summer 2

How might relationships change as I get older? What is Unifrog?

Summer 1

How do I know if my relationships are healthy?

Exploring how we should expect to be treated and how we should treat others.

Summer 2

What is Unifrog?

Year 8

Autumn 1

What does it mean to be healthy?

Autumn 2

How inclusive is Britain today?

Spring 1

Have mobile phones made the world less safe?

Spring 2

How do I manage my finances?

Year 7

Autumn 1

How do I become Heathcote ready?

Autumn 2

Can we eradicate bullying?

Spring 1

Which matters more: our rights or our responsibilities?

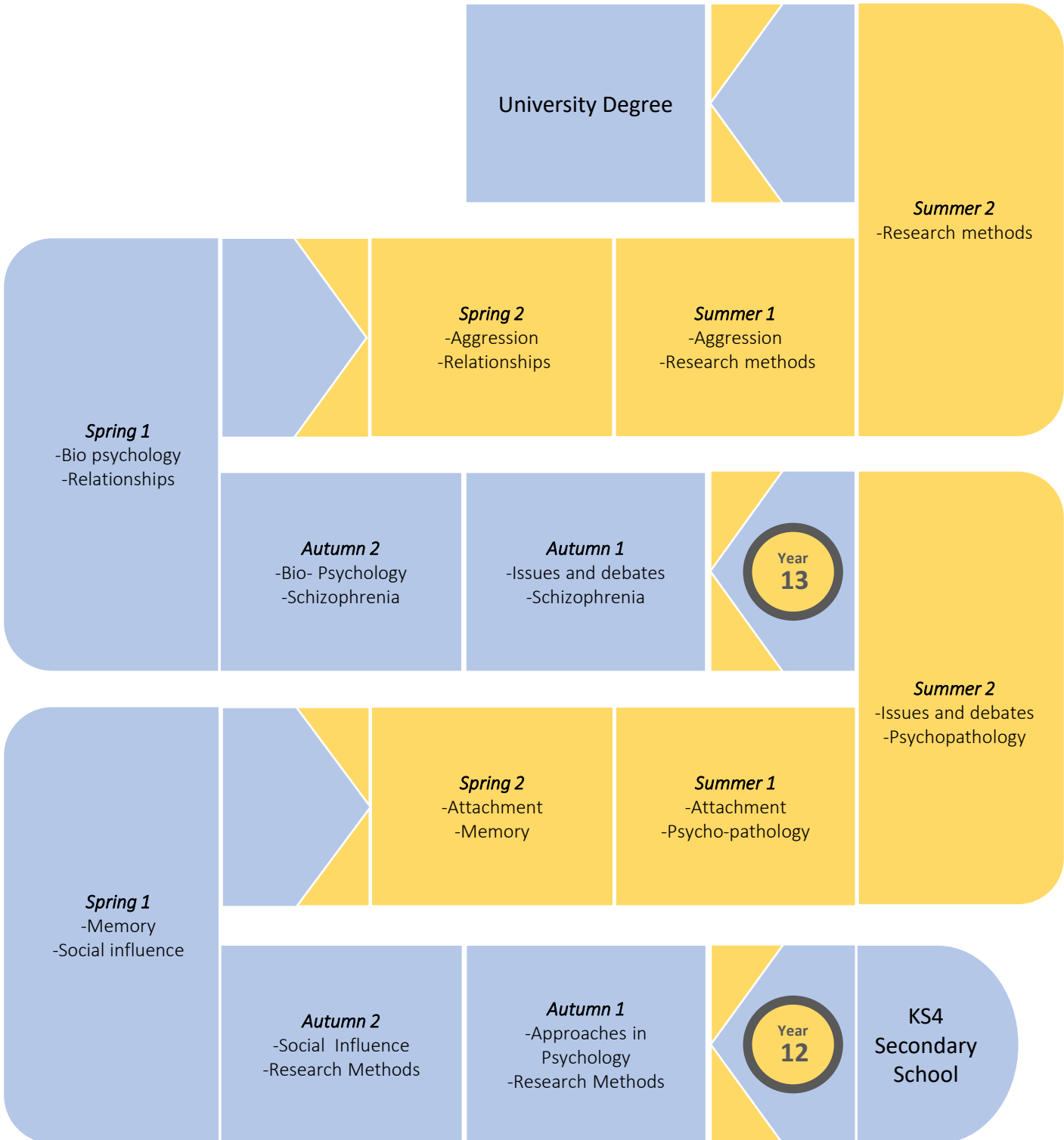
Spring 2

What does it mean to be healthy?

KS2 Primary School

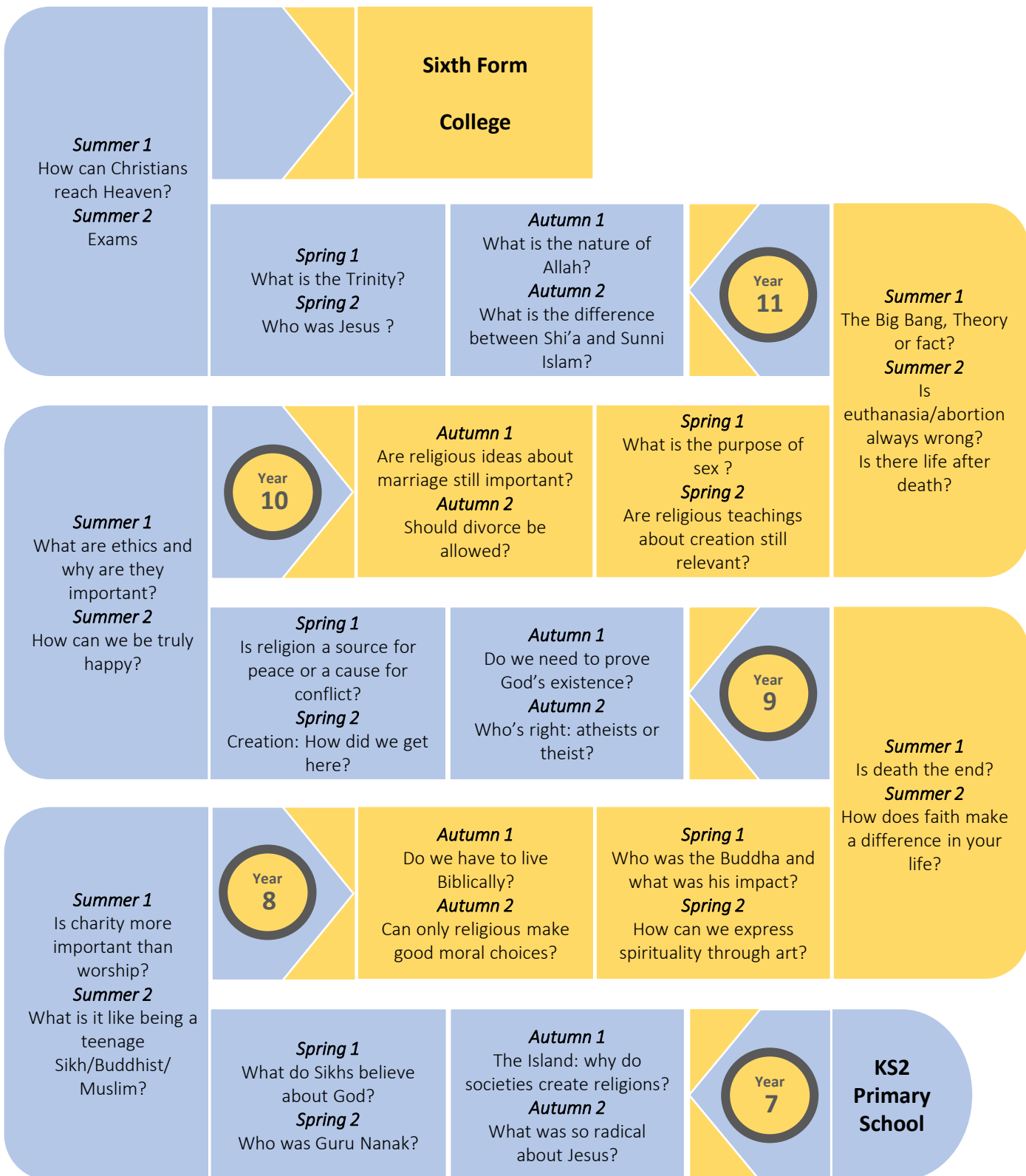


Psychology Curriculum Pathway





RE Curriculum Pathway





Sociology Curriculum Pathway

University Degree

Summer Media

- The processes of selection and presentation of the content of the news
- Media representations**
- The relationship between the media, their content and presentation
- Revision

Year
13

Autumn

Crime And Deviance

- Crime, deviance, social order and social control
- Theory And Methods**
- the social distribution of crime and deviance by ethnicity, gender and social class

Spring

Crime and Deviance

- Globalisation and crime in contemporary society; the media and crime
- Crime control
- Theory And Methods**
- The new media and their significance
- The relationship between ownership and control
- The media, globalisation and popular culture

Summer Family

- The nature of childhood
- Demographic trends in the United Kingdom
- Methods in context**
- Sources of data
- Different types of methods & Evaluation
- Designing research Statistics

Spring Education

- Relationships and processes within schools
- The significance of educational policies, The impact of globalisation on educational policy.
- Family**
- The relationship of the family to the social structure and social change
- Changing patterns of couples and the diversity of contemporary family and household structures
- Gender roles

Autumn

What Is Sociology?

- Perspectives in Sociology
- Social structures
- Social issues
- Education**
- The role and functions of the education system
- Differential educational achievement of social

Year
12

Summer Revision

Year
11

Autumn

Stratification

- Functionalist theory
- Socio economic class
- Life chances
- Poverty as a social issue
- Stratification**
- Power and authority
- Power relationships
- Crime and Deviance**
- The social construction of C & D

Spring

Crime and Deviance

- Social control
- Criminal and deviant behaviour
- Data on crime
- Revision**

Summer Education

- The relationships between education and capitalism
- Educational achievement
- Processes within schools

Spring Families

- Criticism of families
- Changing relationships within families
- Divorce
- Research methods Families**
- Assessment, debates and revisions
- Education**
- =The roles and functions
- Research methods**

Autumn

Sociological approaches/ Social structures

- Social structures
- Social processes
- Social issues
- Families**
- Functions of family
- Family forms
- Conjugal roles
- Research methods**

Year
10

KS3
Years 7-9